

Church of the Holy Family

PARISH RECTORY

234 Hermitage Street
Philadelphia, PA 19127

Phone: 215-482-0450

Fax: 215-482-7531

E-mail: contact@holyfamilychurch.org

Website: www.HolyFamilyChurch.org

Pastor

Rev. Msgr. Patrick E. Sweeney
pastor@holyfamilychurch.org

Pastor Emeritus

Rev. Francis X. McKee

Sunday Visitor

Rev. Michael Shea

Pastoral Service Director and Permanent Deacon

Deacon James Browne

Music Director

Joseph O'Brien

Holy Hour: Second Sunday of each month
after the 11:00am Mass

Miraculous Medal Novena: every Friday
after 8:00am Mass

Altar Servers: Mary Alice Missimer

Cantors: Joseph O'Brien

Extraordinary Ministers:

Jeanine Censi-Lamont

Lectors: Kathy Duffy

RCIA: Wednesday at 7:00pm

PREP: Sundays from 10:00-11:00am



CHURCH SERVICES

Saturday Evening Mass: 4:00pm

Sunday Mass: 9:00am, 11:00am

Weekday Mass: 8:00am

Holy Day Vigil Mass: 7:00pm

Holy Day Mass: 9:00am

BAPTISM

Baptisms are celebrated every third Sunday after the 11:00am Mass. Please contact the rectory for details about the Pre-Jordan program which is held on the first Sunday of the month at 12:00pm in the rectory.

CONFESSION

Saturday: 3:00-3:45pm or any time upon request.

MARRIAGE

Couples must make arrangements at Holy Family at least 6 months prior to the wedding. Call the rectory at 215-482-0450 for an appointment.

MINISTRY TO THE SICK & ELDERLY

Visits those unable to attend Mass due to sickness or age every 2 weeks on Friday from 11:00 to 12:30pm

Pre-Cana Team: Program for engaged couples – John and Beth Delaney

Liturgy Committee: Plans religious services – Jim Browne

Parish Pastoral Council: meets first Monday of the month to confer on Pastoral planning

Women's Club: Meets six times/year and sponsors social activities

**Please note:* If you are interested in participating any of these activities, please contact the rectory at 215-482-0450.

Welcome

We welcome all who join us for worship, and we invite you to become part of our parish family. You may register as a parishioner in the rectory on any Sunday morning after the Masses or any time online.

SUNDAY, FEBRUARY 16, 2025
SIXTH SUNDAY IN ORDINARY TIME



Please remember your CHURCH WEEKLY OFFERING. You can either mail it in or do it by Electronic Giving. Please follow this secure link: www.holyfamilychurch.org/give

Your financial offerings are most appreciated.

SATURDAY, FEBRUARY 15th

4:00pm

McNabb and Capella Family, requested by Joe and Mary Alice Missimer

SUNDAY, FEBRUARY 16th

9:00am

Our Parishioner

11:00am

Frank Giorno, requested by Ann and Debbie Currier

MONDAY, FEBRUARY 17th – 8:00am

William O’Harra

TUESDAY, FEBRUARY 18th – 8:00am

No Intention

WEDNESDAY, FEBRUARY 19th – 8:00am

No Intention

THURSDAY, FEBRUARY 20th – 8:00am

John Giorno, requested by Ann and Debbie Currier

FRIDAY, FEBRUARY 21st – 8:00am

Special Intention

SATURDAY, FEBRUARY 22nd

4:00pm

William Gross, requested by TKA Fraternity

SUNDAY, FEBRUARY 23rd

9:00am

Tom Cassidy, requested by George and Pat Lockard

11:00am

Our Parishioner

Sunday Collection 2/8-/2/9

Sunday (90)	\$ 4,744.00
Aging Priests (24)	\$ 695.00
Catholic Charities (3)	\$ 135.00
Churches in Eastern Europe	\$ 40.00
Ash Wednesday (1)	\$ 20.00
Latin America (1)	\$ 20.00
Military Services (1)	\$ 20.00

TOTAL \$ 4,595.00

The second collection this weekend will be for the Parish.



In your prayers, you are asked to pray for all the sick of the parish and those who care for them especially, Ashley Brown, Christopher Browne, Megan Duffy, Daniel Evans, Jodie Forte, Theodora Garrett, Jane Latta, Edward Lawnton, Lisa Long, Eleanor Maisch, Maeve Mahon, Erin McFarlane, William McGahey Jerry McGough, Megan McHugh, Anthony Pelle, Marie Prince, Daniel Seddon, Bill and Theresa Sherwin, Ava Snick, David Sparacino, Frances Sprenkle, Joseph Synchron, Steve Thummel, Michael Torna, Roy (Toysie) Turvey, Jr., and Elaine Wallace, Bob Woerner.



LCPL. Shane Canavan, Sgt. Shane Carlson, Sgt. Tyler Manigly, Sgt. Morgan Manigly-Haney, Cpl. Dominic Remolde, Captain Zach Schwatka, Col. Scott Shore, and Cpl. Christopher Starrett, PFC Christopher Whittle.



Please pray for the happy repose of all the faithful departed.



50/50 RAFFLE

Don't forget to put your February 50/50 Raffle envelope in the church basket.



The Catholic Parishes of East Falls, Manayunk, Roxborough and Andorra will present the Pre-Cana Marriage Preparation Program for engaged couples on SATURDAY, MAY 31, 2025 in Father Sullivan Hall, Immaculate Heart of Mary Parish, 819 E. Cathedral Road. The day begins with registration at 9:30 AM and concludes with attendance at the 5:15 PM Vigil Mass. Continental breakfast and lunch are provided. Certificates are distributed after Mass. Cost is \$100.00 per couple. To register, please call Holy Family Rectory, 215-482-0450, Monday through Friday between 9 AM and 3 PM.



We are in need of Eucharistic Ministers for the 4:00pm, 9:00am and 11:00am Masses.

If anyone is interested please contact Jeanine Censi-Lamont at 267-278-2936 or contact the rectory at 215-482-0450.

**BROTHER OF BORROMEO
VOCATION CAMP 2025**

Saturday, March 22, 2025 9:00 AM - 4:30 PM St. Charles Borromeo Seminary 1400 Evans Road Ambler, PA 19002 For young men in grades 6, 7, and 8.

Registration Due: February 28, 2025 \$25 registration fee per person includes lunch and a t-shirt Questions? Contact Grace Murphy, at gmurphy@archphila.org or 610-667-5778 Or visit HeedTheCall.org/BBVC



Gospel reflection group will meet on Wednesdays from 7-7:45 pm in the Parish Center. The Gospel for the coming Sunday will be read and discussed.



AN INVITATION FROM ARCHBISHOP PEREZ

Dear Brothers and Sisters, Peace be with you on this feast of St. John Neumann, the Fourth Bishop of Philadelphia! I am writing to you because I need your help. Please join me for a conversation about our future. Your voices and presence are essential as we navigate our way forward together as the Church of Philadelphia.

Thank you.

I am deeply grateful for all of you. One of my greatest joys as Archbishop comes from the interactions I have with you as I travel around the Archdiocese. Coming to know you personally and to see how you serve our community is awesome! Your resilience is a testament to God's work in our lives. The Church of Philadelphia has experienced more than two decades of crisis; everyone has suffered here in one way or another. When I received the call to come home to Philly as Archbishop five years ago, the biggest priority on my heart was to help our Church move from crisis to hope. That remains my top priority, but I cannot do it alone. I need your help. Our hope rests in the Lord, in whom we trust. God relentlessly pursues all of us, His beloved children. As your brother, I yearn for a deeper encounter with Him. As your Archbishop, I want you to know that God continues to reach out to encounter you. He loves you. You have a home in the Church. The light is on, and the door is open. In Pope Francis's own words: "I invite all Christians, everywhere, at this very moment, to a renewed personal encounter with Jesus Christ, or at least an openness to letting Him encounter them...No one should think that this invitation is not meant for him or her, since 'no one is excluded from the joy brought by the Lord'...Whenever we take a step towards Jesus, we come to realize that He is already there, waiting for us with open arms." (Joy of the Gospel 3)

We need everyone in our lives and across our local Church to know this. Where do we start?

WHERE ARE WE TODAY?

To get anywhere, you need to know where you are starting from. We are living in times more like the earliest Christians—times when many are living without Christ. Many Catholics have drifted away or been driven away from the practice of the faith, creating a challenging landscape. Connected more than ever by technology, people, especially the young, experience an epidemic of loneliness, anxiety, and despair. We have faced crises that have tested our faith and diminished our numbers. Yet, even amidst this suffering, hope persists. Our hope is in the Risen Lord, Jesus Christ, who is always calling us home. Our current task is to carry that hope to those who feel distant from the Church—those who may have slipped away or feel pushed away, angered and impacted by the abuse scandals, and those still seeking connection. Today, 83% of our fellow baptized Catholics don't come to church. That fact needs to make us uncomfortable. We need to have urgency around this.

A PASTORAL CHANGE OF HEART

When determining how to respond to such a pressing need, discussion in dioceses around the world typically starts with 'pastoral planning.' This term usually describes a process that starts with the question, "Where can the Church no longer afford to be due to finances or the number of priests?" We know the answer to this question often leads to parish closures. In Philadelphia, the answer to this question has resulted in numerous closures in places like North Philadelphia, West Philadelphia, and Chester. I do not want to perpetuate this cycle. I want to embark on a new form of pastoral planning by asking a new question, "Where does the Church need to be and how?" We need to inspire a pastoral change of heart that focuses on those who are absent and that aligns our collective efforts across parishes, schools, and charitable ministries to listen, rebuild trust, and invite people home. This change of heart starts with me, and it requires your help. As I have been out and about during these past five years, I've heard stories of interactions with the Archdiocese that have caused a strained and deteriorating relationship. These stories are from your friends, coworkers, neighbors, parents, or your children, and grandchildren. We can do better. I can do better. I want to begin to close this distance between many of our loved ones and the Church.

I want people to know that the Lord is still calling them, that they are of great worth, have a divine purpose, and an eternal home.

The Church describes a person that goes forth encountering people in this way as a "Missionary Disciple." While that language may feel foreign, I encourage you to embrace it. When you boil it down as Pope Francis states in Joy of the Gospel it becomes clear it is something we all naturally strive to be:

"The Church which 'goes forth' is a community of missionary disciples who take the first step, who are involved and supportive, who bear fruit and rejoice. An evangelizing community knows that the Lord has taken the initiative, he has loved us first (cf. 1 Jn 4:19), and therefore we can move forward, boldly take the initiative, go out to others, seek those who have fallen away, stand at the crossroads and welcome the outcast" (Joy of the Gospel 24)

Many times, you may be the only person in a loved one's life who can reach them when they are feeling lost or disconnected. Your encounters can mark the beginning of their return. This is our shared mission: to proclaim the Good News of Jesus Christ's love, mercy, and resurrection to a world that desperately needs it.

We must be a community of Missionary Disciples focused on renewal, rebuilding trust, and inviting people to a relationship with Jesus Christ!

WHERE DOES THE CHURCH NEED TO BE?

Historically, Philadelphia has taken an on/off approach to parish life—with parishes either open or closed. When I became Archbishop, the second question at my introductory press conference was, "Will you close parishes?" My answer then, and now, is the same: I didn't come here to close parishes; I came here to build up the Church of Philadelphia.

Pope Francis encourages us to think of parishes as flexible entities that can adapt to the surrounding world:

"The parish is not an outdated institution; precisely because it possesses great flexibility, it can assume quite different contours depending on the openness and missionary creativity of the pastor and the community." (Joy of the Gospel 28)

Not all parishes need to be the same. They should be 'flexible centers for ongoing missionary outreach.' A pastor and his

community are responsible for the wellbeing of all souls in the parish, not just those who attend Mass or parish events. Too often, we think of our parish only as those who enter the church doors

Many parishes that experienced decline in past decades are now flourishing with different communities or cultures filling the pews. In other places, small communities of faith have persevered amid challenging circumstances and have been a beacon of hope for their communities..

However, I am not naïve about the number of parishes we have and how we are spreading our priests thin. While I want to avoid widespread parish closures, we will inevitably face some changes and closures over time. My hope is that, through flexibility and an open heart, we can work creatively to meet the needs of our parishes and create more time for the Holy Spirit to inspire them..

HOW DOES THE CHURCH NEED TO BE?

To build up the Church, we must form our people to be Missionary Disciples. Pastoral planning focusing solely on changing our current parish footprint will not cultivate that culture. We need to try something new. The goal of this initiative is a pastoral change of heart over the next twenty years. It begins today by planting seeds and tending the garden as the fruits of our efforts begin to grow.

Over the next decade, I want to establish “Missionary Hubs” across the entire Archdiocese, aiming for at least ten per county, planted at parishes and other locations. The goal is to reach out to Catholics who don’t participate and non-Catholics, using our resources and talents to ignite a spirit of Missionary Discipleship. This will create a supportive network of missionary life across the whole Archdiocese, animating our communities everywhere, especially in underserved areas.

We need to plan for these Missionary Hubs in a spirit of synodal discernment and collaboration. I want communities and leaders to express interest in having a Missionary Hub planted at their parish. The seeds planted today will be the evangelical fruit of tomorrow.

THESE MISSIONARY HUBS WILL FULFILL SEVERAL ROLES.

They will turn the Church outward, focusing on those not currently engaged in the life of the Church and working to reconnect them. Community provides a connection point that many crave in today’s world.

They will connect various Catholic ministries within a community—high schools, elementary schools, Catholic Human Services, religious communities, and parishes—ensuring that we work together and maximize the use of our resources where they will have the most impact.

They will work to bring people to Jesus—through the Eucharist and through service to the poor. Some of our brothers and sisters may not be ready to return to Mass immediately but could encounter Jesus through acts of service, a steppingstone to returning to church. As Jesus exhorts his disciples, “whoever loses his life for my sake and that of the Gospel will find it.” (Mark 8:35).

If and when parishes need to adapt, change, or close, the hubs will be a local community with resources and talent prepared and formed to welcome and care for new people. Parish renewal and reimagining ministry Missionary Hubs would help to support parish life, reopen in our Church deserts, and inspire our people to be Missionary Disciples.

PARISH RENEWAL AND REIMAGING MINISTRY

Missionary Hubs will have full-time staff working under a pastor committed to outward engagement. The staff may include service coordinators, communications experts, event specialists and missionaries all focused on facilitating an encounter with Christ and his Church.

We would plant Missionary Hubs throughout the Archdiocese and allocate resources where they are needed most, especially the poorest areas of our community.

A Missionary Hub would anchor hope and ensure a vibrant future of the Church for your children and grandchildren with an impact for generations.

All of our institutions and communities must embrace flexibility to welcome new members while preserving their traditions and sharing the authentic faith. We are called to care for everyone, including our elder parishioners who’ve called the same parish home for a lifetime and the young adults who tend to move across parish lines to find a welcoming community.

To support our parishes as long as possible as we face the reality of having fewer priests available for pastoral assignments, we may introduce Parish Life Directors: deacons, men and women in consecrated life, or lay individuals to manage operations without a resident priest and under the guidance of the Regional Bishop. This will allow retired and senior priests to continue to care for souls in these communities and to offer the sacraments without bearing the responsibilities of administration.

We must prioritize resources and support for evangelization. Investing in growth is critical, and harnessing the wisdom and energy of our retired priests in this way will be a gift to the Church of Philadelphia during this time of renewal.

I am so grateful for the generosity of spirit of our amazing priests, deacons, religious, and dedicated lay leaders and ministers that make Church happen every day because of their loving and passionate hearts. A growth mindset cultivates fruitfulness, leading to many more vocations to the priesthood, religious life, and marriage.

AN INVITATION

I invite you to join me this coming spring for discussions about the future of the Church of Philadelphia. I see our local Church as a hub of evangelization, vibrant with hope and grace. But to move forward, I need to listen to your hopes, dreams, concerns, and desires for renewal. Please join me.

Let us not underestimate the power of the Spirit of God working in us, through us, and despite us. As Saint Paul says, we believe in a God “who is able to accomplish far more than all we ask or imagine, by the power at work within us” (Ephesians 3:20). Our hope remains in the Lord. Let us rely on God’s love for each one of us and be conduits of grace.

You are resilient. You are loved. Your steadfastness despite social and spiritual challenges doesn’t go unnoticed. Thank you for walking this journey with me and for embodying the heart and soul of our Church. Just as Saint John Neumann and Saint Katharine Drexel led with love and resilience, may they intercede for us as we move forward in faith.

Please pray for me and be assured of my prayers for you each day.

Sincerely Yours in Christ,

+Most Reverend Nelson J. Perez, D.D.

Most Reverend Nelson J. Pérez, D.D. Archbishop of Philadelphia

Join Us...

for our Pre-Planning Seminars

Get your ducks in a row.

We'll guide you through the steps of preparing your final wishes, options for placement of your remains, funeral personalization, and addressing the financial options of final expenses.



Call Us For More Info About Upcoming Dates & Locations!

844-451-9614

www.PhiladelphiaCatholicCemeteries.com



PHILADELPHIA • BUCKS • MONTCO • DELAWARE • CHESTER

ST. MARGARET SCHOOL
NARBERTH
Preschool 3 yrs.-8th Grade



SAINT MARGARET SCHOOL

https://smsnarberth.org



Make a Difference in Your Community

VOLUNTEER

with the American Red Cross

Join today at redcross.org/Volunteer

KOLLER FUNERAL HOME

William P. Koller, Jr., F.D.
Katherine Koller Franczyk, F.D.
6835 Ridge Avenue
215-482-5200

"Serving the Area for Over 75 Years"



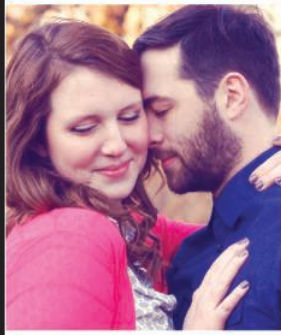
**VISIT THE
MOUNT**

Apply Now or
Schedule a Visit!



Learn more at
MSJACAD.ORG

catholicmatch®
Pennsylvania



CatholicMatch.com/
datePA

MEDICAID PATIENTS & CAREGIVERS

100% Covered by Medicaid.
Choose Family or Friends as your paid caregiver.
Caregivers, Get PAID, Instantly!

Call Now!
814.388.0301
FREEDOMCARE.COM

★★★★★
**OVER 7,000
5 STAR REVIEWS**



FreedomCare
COMPASSION • INDEPENDENCE • CHOICE

OUR SPONSORS & OUR COMMUNITY



Sponsors can offer promotions, discounts and/or up-to-date contact information to the **ENTIRE** community

Finding **FABER**

ANYONE in the community, not only Parishioners, can access realtime offers from their favorite sponsors to save, share & support



JOHN PATRICK
publishing company, inc.

For Advertising
Information Contact
WYATT GROVE
Cell: 610-212-9298
wegrove@jppc.net

RIDESHARING SAFETY TIPS

**BEFORE YOU GET
IN A RIDE SHARE**

ASK **#WHATS
MYNAME**

S stop
A ask
M match
I inform

in remembrance of
Samantha Josephson



**MALLORY'S
ARMY®**
Foundation

United Together In The Fight Against Bullying...
Don't Just Teach Kindness... **BE KINDNESS!**

www.MallorysArmy.com
(973) 440-8657 | info@mallorysarmy.org

It's easy to join our mailing list!

*Just send your email address by text message:
Text **MALLORYSARMY** to 22828 to get started.*

Message and data rates may apply.